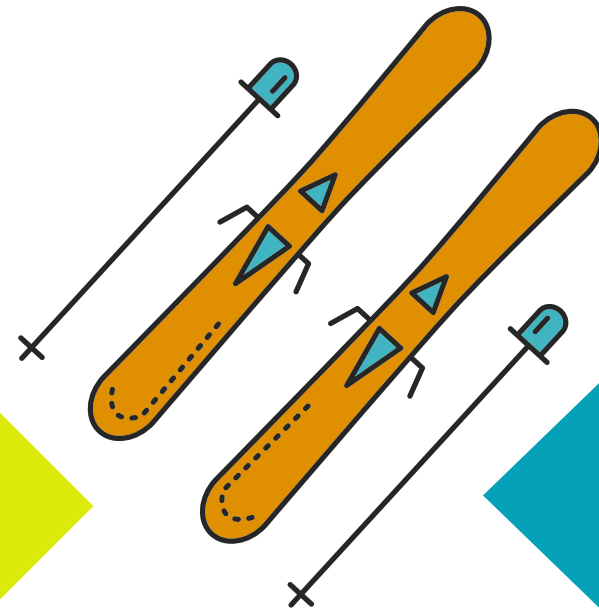


# Handbook 3rd Cycle of Elementary School The Laurentian Ski Museum

*The Museum invites you to discover the Laurentian heritage*







## TABLE OF CONTENTS

THE LAURENTIAN SKI MUSEUM _____	2
INTRODUCTION TO THE EDUCATIONAL SERVICES _____	4
EDUCATIONAL ACTIVITIES _____	5
3RD CYCLE OF ELEMENTARY SCHOOL _____	6
SUGGESTED TEACHING APPROACHINFORMATIONS PRATIQUES _____	7
PRACTICAL INFORMATION _____	8
GENERAL INFORMATION _____	8

## THE LAURENTIAN SKI MUSEUM

In 2017, the LSM celebrates its 35 years of existence. Since 2008, the museum is housed in a building that belongs to the City of Saint-Sauveur, and is the former police and fire station. The foundation of the LSM was the endeavour of a group of passionate members of the Société d'histoire et de généalogie des Pays-d'en-Haut, after they had created a research committee in the 1980s. Gradually, the collection was gathered. Today, the Museum manages a collection composed of more than 7000 artifacts and 17 private archival holdings. The LSM is a regional thematic history museum.

## PERMANENT EXHIBITION

The introduction of skiing in the Laurentian area, first as a means of locomotion on snow, then as a participatory and competitive sport, has contributed and continues to contribute to the social, economic, tourism, and cultural development of the Laurentian territory. From a forest and agricultural area, skiing has made the Pays-d'en-Haut region a real haven for winter sports, and is considered as the birthplace of skiing in Canada. The Laurentian Ski Museum intends to propose the main stages of the history of ski in the Laurentians, in order to further understand how Man could live in winter, with winter and from winter.

## MISSION AND MANDATE OF THE LAURENTIAN SKI MUSEUM

### **An historical approach:**

From its collection and its archives, the LSM raises the subject of history, as linked to the development of skiing as a winter sport, and of its impact on social, economical and cultural life of the Laurentians area

### **An approach to highlight the area cultural identity:**

It is important to preserve the collective memory of the role played by this sport in the development of the Laurentians, and of the province of Quebec and Canada. The Museum wishes to bring out the best of this heritage that has marked the regional cultural identity.

### **A public-oriented approach:**

Aware of the public's needs and interests, the Museum provides for the development and loyalty of various types of clients, through its different activities.

### **An educational-centered approach:**

The distribution is focused on the promotion of the Museum's high-quality permanent and temporary exhibitions.



## INTRODUCTION TO THE EDUCATIONAL SERVICES

The Laurentian Ski Museum's educational services offer various activities, and among others, guided tours for 5 persons or more, in French or English. The visits are adapted to the clientele and may meet the interests of different publics, whether from preschool level or specific specially-dedicated groups or associations. Our maximum capacity is of 35 people. For larger groups, it is possible to split them in to smaller groups, and even to combine the visit of the Museum with another activity in Saint-Sauveur. For example, we can offer one or several activities in cooperation with the Saint-Sauveur municipal library, which is just a minute's walk of the Museum. Through its activities, the LSM's main objective is to make ski better known, as a means of locomotion which became a participating and competitive sport, and which played and still plays an important role in the economic, social and cultural development of the Laurentians.

## EDUCATIONAL ACTIVITIES

Activity	Type of activity	Intended audience	
<i>Sliding sports * (to come)</i>	Activity Kit	Preschool	
<i>Man, ski and winter</i>	Educational package	1st and 2nd cycle	
<i>In what year?</i>	Adapted tour with material	3rd cycle	
<i>Ski, history and society</i>	Tour	Adults	

## DESCRIPTION OF THE ACTIVITIES

### Sliding sports \*(to come)



30 minutes

A complete fun activity kit for preschoolers. Come and discover the sliding sports, based on the history of Jackrabbit. To conclude the visit, the children will have the pleasure of drawing a picture on the subject of winter.

\*A guided tour for preschoolers may be offered.

### Man, ski and winter



90 minutes (divided up in 3 steps)

A complete educational kit specially designed for students of the 1st and 2nd cycle, which addresses the history of the Laurentians and the importance of ski in its past and present development. This activity touches the social environment and enables the children to get familiar with the museum community.

\*A guided tour for school groups may be offered.

### In what year?



30 minutes (+15 minutes preparation / 15 minutes return period)

A guided tour intended to 3rd-cycle students, focusing on today's reality, with related material included. In what year was the snowboard invented? In 1965, Sherman Popper has marketed the first snowboard. Will you be able to answer our questions? In the form of an animated quiz game, this tour is perfect for youth, while enabling them to discover the high points and key dates of the history of ski in the Laurentians and all over the world.

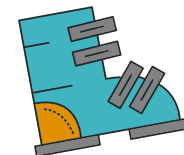
\*This tour can be combined with another activity in Saint-Sauveur.

### Ski, history and society



1 hour

A guided tour intended for adults, including the visit of the permanent exhibition, with access to added content.






## 3RD CYCLE OF ELEMENTARY SCHOOL

The guided tour offered to students of 3rd cycle of elementary school meets the school curriculum, since it tells the story, not only of skiing, but also of a region: the Laurentians. The tour is punctuated by significant facts and events. Moreover, the information shared plays a bridging role with the students' reality of today. We encourage the teachers to follow this learning approach. Therefore, the students will get familiar with this knowledge, as it is shown in studies performed on museum education.

In a nutshell, through its learning program, the Ski Museum focuses on making better known this locomotion means that turned into a participating and competitive sport, and which played and still plays a significant role in the Laurentian's economical, social and cultural development.

## SUGGESTED TEACHING APPROACH

Steps	Description	Location	Time
<b>Step 1</b>	-To present the Laurentian Ski Museum to the students -To read the Museum's mission and history -Behavior to adopt in a museum	Classroom	 15 minutes
<b>Step 2</b>	-Guided tour	Museum	 30 minutes
<b>Step 3</b>	-Reflection on the visit. Material supplied	Classroom	 15 minutes
<b>Step 4</b>	-To go a step further... The visit may be the stepping-stone to initiate a project in class	Classroom	—

## PRACTICAL INFORMATION

### Rate

Free admission.  
We suggest a 3\$-donation per person to the Museum, to enable the Museum to pursue its mission.

### Reservation and information

Nancy Belhumeur  
nancy@museduski.com  
450 227-2564, ext. 222

## GENERAL INFORMATION

### Accessibility

The Laurentian Ski Museum is accessible to people with reduced mobility.

### Parking

Free parking spaces in municipal parking lots behind the church and at the city hall.  
Bus drop-off area:  
(De l'Église Avenue and Filion Avenue).

### Itinerary

Highway 15  
Exit 60, Saint-Sauveur  
Within walking distance  
Follow touristic signs.

*The Laurentian Ski Museum  
is YOUR museum!*

### General Manager

Pierre Urquhart

### Research, concept and drafting

Nancy Belhumeur

### Certified Reviser and Translator

Édith Courtois

### Riopel Design & Communication inc.

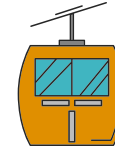
Édith Riopel, Graphic Designer & Webmaster

### The Laurentian Ski Museum wants to thank :

La MRC des Pays-d'en-Haut,  
La Ville de Saint-Sauveur,  
La Chambre de commerce et de tourisme de  
la Vallée de Saint-Sauveur.

### This project was carried out thanks to the involvement of :

Mr. Michel Allard, consulting historian, Laurentian Ski Museum,  
Mrs. Julie Gratton, Saint-Sauveur city councillor.  
Mr. Pierre Dumas et Mrs. Éleine Cousineau



### Laurentian Ski Museum

30, Filion Avenue  
Saint-Sauveur (Quebec) J0R 1R0

450 227-2564, ext. 222

1 877 528-2553

info@museduski.com

www.museduskideslaurentides.com

### Follow us on Facebook!

Open Wednesday to Sunday

Free admission

A 3\$-donation per person would be appreciated.



Québec 

Entente de développement culturel